



2025 GROUP HOSPITALITY EVENTS **PORTLAND TIMBERS**



Host your next group outing at a Portland Timbers match in your own exclusive hospitality space and entertain in style!

EMPLOYEE ENGAGEMENT/TEAM BUILDING EVENT

CLIENT ENTERTAINMENT EVENT

SUMMER PICNIC

BIRTHDAY OR ANNIVERSARY CELEBRATION

BACHELOR OR BACHELORETTE PARTY

GATHERING WITH FAMILY OR FRIENDS

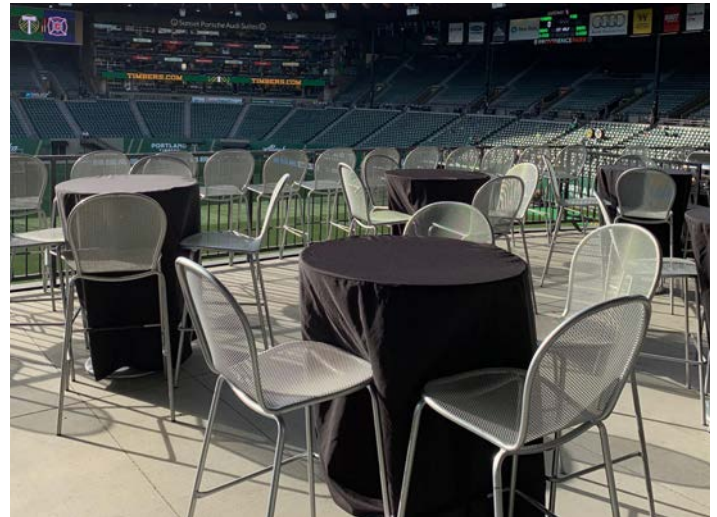
No matter the occasion, there is a unique location at Providence Park for your event. Let the Timbers assist with the planning!

TICKET SALES | (503) 553-5555 | TICKETSALES@TIMBERS.COM

CLUB DECK



The Club Deck, located directly above the Club on the concourse level, is the premier hospitality space the Timbers have to offer. It is a covered, open-air, private event space located directly at the midfield line. The Deck overlooks the field, providing your guests with the best sightlines in the stadium as well as unparalleled views of Timbers game action and the entire stadium.



SIZE OF GROUP/CAPACITY

GROUPS OF 20 - 120 PEOPLE

COST

\$175 - \$195 PER PERSON

FOOD & BEVERAGE

Full bar and catering options available to choose from provided by Park Provisions (see Page 7)



TOYOTA TERRACE DECK



The Toyota Terrace Deck is a brand new hospitality space located in the northeast corner of the stadium on the Toyota Terrace level. It is a covered, open-air, private event space equipped with bistro-style tables and chairs. The Deck is proximate to the Timbers Army and provides spectacular views of the entire stadium as well as the pitch.



SIZE OF GROUP/CAPACITY

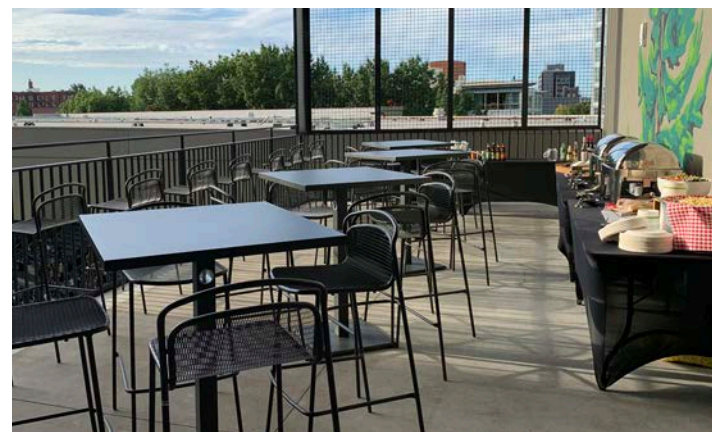
GROUPS OF 25 – 30 PEOPLE

COST

\$125 – \$150 PER PERSON

FOOD & BEVERAGE

Full bar and catering options available to choose from provided by Park Provisions (see Page 7)



TICKET SALES | (503) 553-5555 | TICKETSALES@TIMBERS.COM

MODELO CANTINA



The Modelo Cantina is a partially-covered, private party deck overlooking the northeast corner of the field. Situated directly next to the Timbers Army, this amazing location provides your guests with a truly unique viewing experience. The Cantina boasts a large footprint, private staircase/elevator, and comes furnished with bistro-style tables and chairs.



SIZE OF GROUP/CAPACITY

GROUPS OF 50 - 75 PEOPLE

COST

\$110 - \$135 PER PERSON

FOOD & BEVERAGE

Full bar and catering options available to choose from provided by Park Provisions (see Page 7)



THE PUB BEER PATIO



The Pub Beer Patio is one of most exciting areas in Providence Park to host an event. Located on field level behind the goal on the south end of the stadium, this open-air party deck area can accommodate larger groups and will provide your guests with a one-of-a-kind viewing experience of all the Timbers game action.



SIZE OF GROUP/CAPACITY

GROUPS OF 50 - 400 PEOPLE

COST

\$45 - \$55 PER PERSON

FOOD & BEVERAGE

Park Bucks/concession vouchers available



TICKET SALES | (503) 553-5555 | TICKETSALES@TIMBERS.COM

EAST VISTA DECK



The East Vista Deck is the newest hospitality option the Timbers have to offer and will provide a true “tailgate” type experience for your group. This is a standing room only space with the option to set up an exclusive catering spread in your private area.

East Vista is the top level of the new Eastside stadium expansion and not only provides amazing views of the field but also the Portland skyline. Groups that reserve the East Vista Deck will be able to flow throughout the East Vista level.



SIZE OF GROUP/CAPACITY

GROUPS OF 50 – 300 PEOPLE

COST

\$50 PER PERSON

FOOD & BEVERAGE

Full bar and catering options available to choose from provided by Park Provisions (see Page 7)



OLD TRAPPER LODGE



Overlooking the Northeast corner between sections 99 and 101, this party deck area offers a unique location for your event. Your group will be able to soak in the passion of the Timbers Army or Rose City Riveters, while enjoying your own private space.



SIZE OF GROUP/CAPACITY

GROUPS OF 25 - 30 PEOPLE

COST

\$125 - \$150 PER PERSON

FOOD & BEVERAGE

Park Bucks/concession vouchers available.



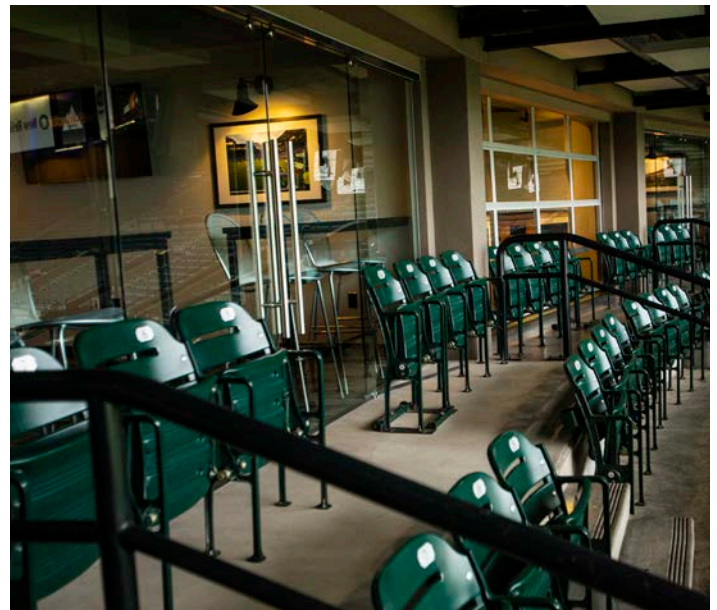
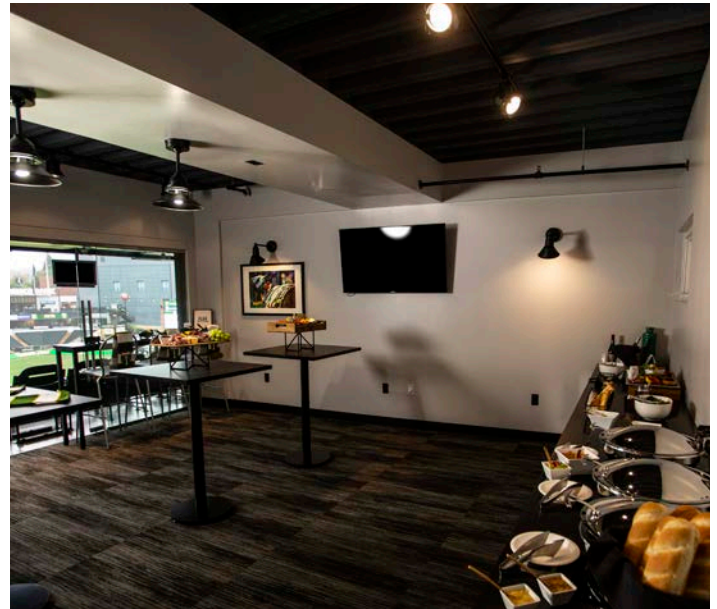
TICKET SALES | (503) 553-5555 | TICKETSALES@TIMBERS.COM

FIRST TECH SUITES



There is nothing quite like the comfort of a private suite while enjoying the unmatched experience of a Portland Timbers match. The First Tech Suites offer sweeping views of the action from the northwest corner of the stadium. Combining a premier hospitality space, with hands-on service, in one of the most sought-after venues in Portland – this will be an unforgettable experience, no matter what the occasion is.

- PRIVATE BOX WITH DEDICATED INDOOR AND OUTDOOR SEATING OPTIONS
- UP TO 15 OR 25 TICKETS INCLUDED WITH THE SUITE PURCHASE
- COMPLIMENTARY VIP PARKING PASSES
- DEDICATED PRIVATE ENTRANCE
- BUILT-IN INDOOR AND OUTDOOR TV'S
- COMPLIMENTARY IN-SUITE WI-FI
- DEDICATED SUITE SERVICE AND CATERING ATTENDANT



SIZE OF GROUP/CAPACITY

GROUPS OF 15 - 25 PEOPLE

COST

\$2,500 - \$7,500

FOOD & BEVERAGE

Full bar and catering options available to choose from provided by Park Provisions (see Page 7)

PARK PROVISIONS

Coming to a Portland Timbers match and want to provide an amazing food and beverage experience for your guests? We are here for you! Whether it's a popcorn bar with endless soft drinks or cold chilled shrimp, hand crafted Mac & Cheese, BBQ Pork and a Platinum bar, Park Provisions has a menu that is sure to please the whole crowd! Please contact your Group sales representative to assist with menu planning for your event. There is a catering option for everyone.





FOR MORE INFORMATION PLEASE CONTACT

TICKET SALES

(503) 553-5555 | TICKETSALES@TIMBERS.COM